

HYDRAWINDER RETROFIT GUIDE

This guide will assist you in the retrofit of the **HydraWinder** system. This will prepare your current **HydraWinder** to be used with the **HydraF8R**. Before any work is performed, make certain that all precautions are followed to insure the safety of others and to prevent damage to equipment. Verify that the Reel Lift hydraulic system has sufficiently cooled down before removal of any hydraulic components.

Item No.	Part Number	Description	Qty.	
1	SUB-HW-OSP	Outer side plate assembly	1	
2	SUB-HW-MID PLT	Mid plate section	1	
3	FP-RL-HW-ISP	Inner side plate	1	
4	SUB-HW-MTR MNT	Motor mount	1	
5	BO-3/4 Thrust flat washer	3/4" Thrust flat washer	2	
6	BO-1/2X1-1/2 HEX	1/2" X 1-1/2" Bolt	12	
7	BO-1/2X2 HEX	1/2" X 2" Bolt	4	
8	BO-1/2 HNN	1/2" Nyloc nut	16	
9	BO-3/4X6	3/4" X 6" Bolt	1	
10	BO-3/4 HNN	3/4" Nyloc nut	1	

Disassemble the **HydraWinder** as follows:

1. Remove the hoses from the hydraulic motor and cap off the hoses and fittings in the motor to prevent contamination and excessive oil leakage.

2. Remove the spring pins in the acme nuts closest to the rear of the **HydraWinder**, spin off the outer nut and remove the bronze washer. **Figure 1**

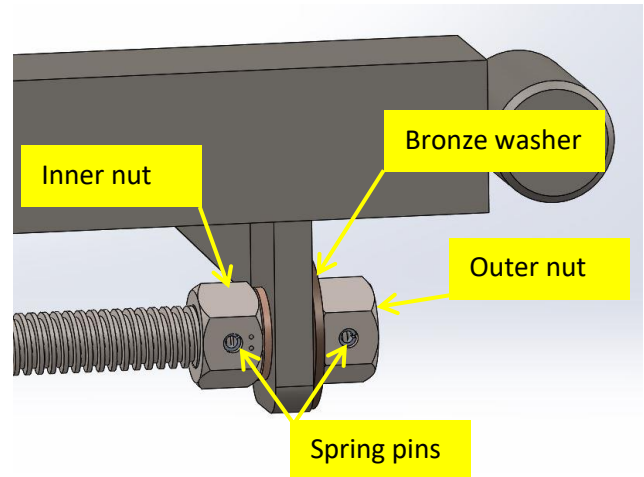


Figure 1

3. Push the acme rod out of its guide hole and remove the inner acme nut. **Take note of the position and placement of the nuts as they need to go back in the same place. Failure to do so will not allow the spring pins to be driven into place. The nuts are marked by dots that are stamped in the end face of them.**

4. Spin the acme nut at the rear end of the **HydraWinder** to unthread the acme rod from the motor assembly and remove the rod. Before removing it, note the position of the components that are on the acme rod that make up the bottom portion of the motor assembly and set aside. **Figure 2**

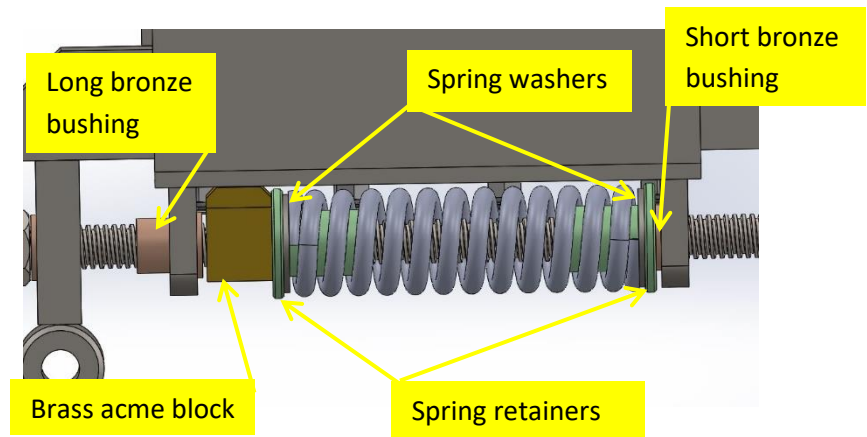


Figure 2

5. Remove the wheel from the hydraulic motor wheel hub and remove the wheel hub to gain access to the four (4) motor mount bolts and remove the bolts. **Figure 3**
6. Remove the motor from the motor mount bracket and set aside.

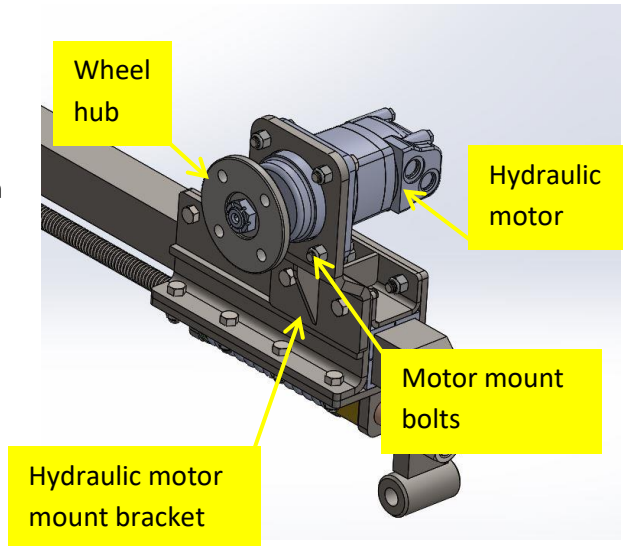


Figure 3

7. Remove all twelve (12) of the motor mount assembly bolts to disassemble the motor mount from the sliding mechanism. The existing plastic angle guides, components removed in step 4 will be reused in the assembly of the retrofit motor mount assembly. **Figures 4 & 5**

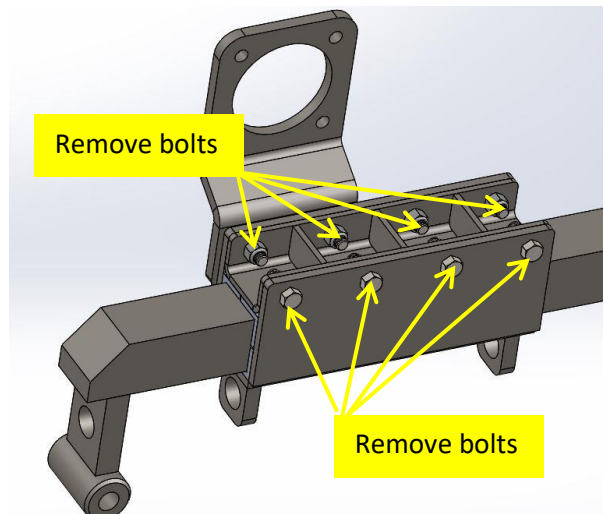


Figure 4

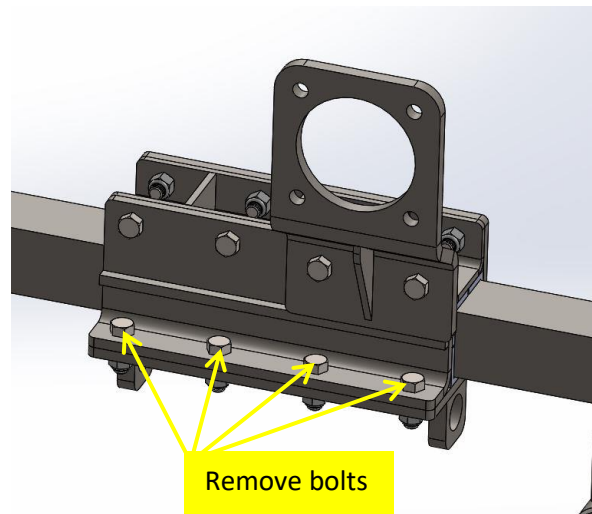


Figure 5

8. Transfer the bronze bushings from the old motor mount assembly to the outer side plate (**ITEM 1**) with the long bushing in the rear hole and the short one in the front. Place the lower portion of the outer side plate assembly on the sliding mechanism with two (2) of the plastic angle guides one on each side of the sliding mechanism as shown. Make certain that the guides are within the confinements of the retaining tabs.

Figure 6

Note: Assistance may be needed to hold components in place during assembly.

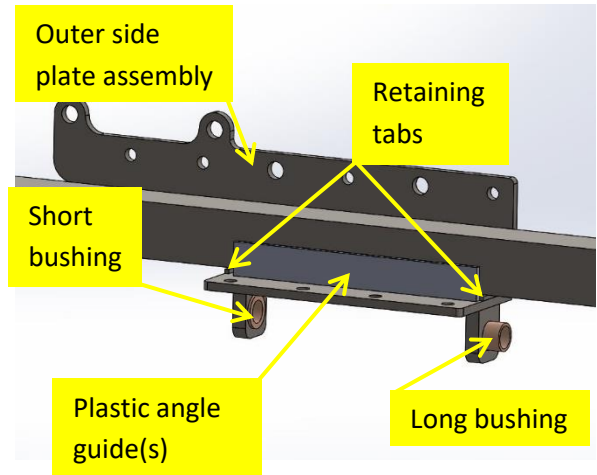


Figure 6

9. Thread the acme rod through the sliding mechanism, through the long bronze bushing and thread the brass acme nut onto the acme rod next to the bushing. **Figure 7**

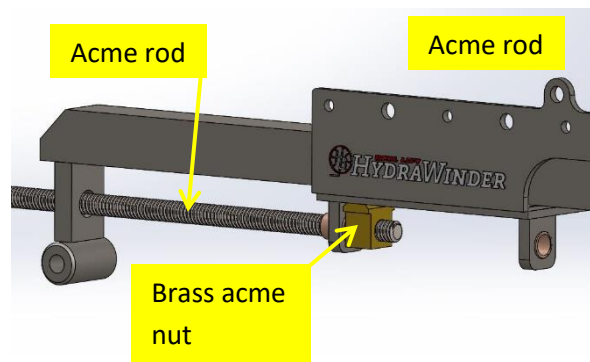


Figure 7

10. Refer to Figure 8 for placement of the remaining components of the side plate assembly and thread the acme rod through the components and to the front guide hole. **Figure 8**

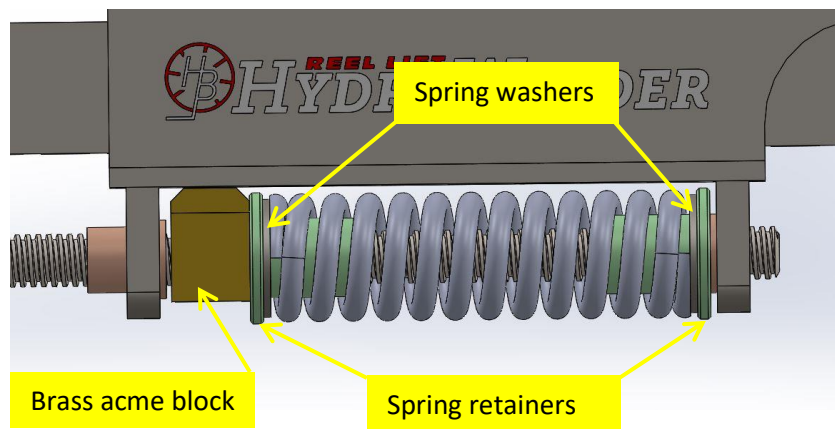


Figure 8

11. Thread the inner acme nut onto the acme rod with the two (2) punch marks on the side facing toward the end of the rod and thread the rod through the guide hole. Place the bronze washer onto the rod and thread the remaining acme nut onto the rod with the two (2) punch marks on end face of the nut facing outward. Line up the holes in the rod and the acme nuts and reinstall the spring pins. **Figure 9**

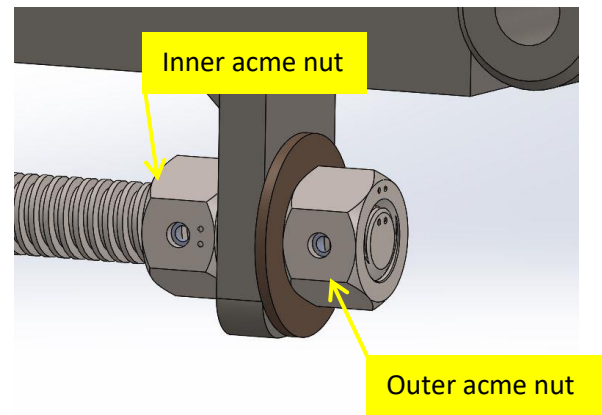


Figure 9

12. Place the two (2) remaining plastic angle guides on top of the sliding mechanism. **Figure 10**

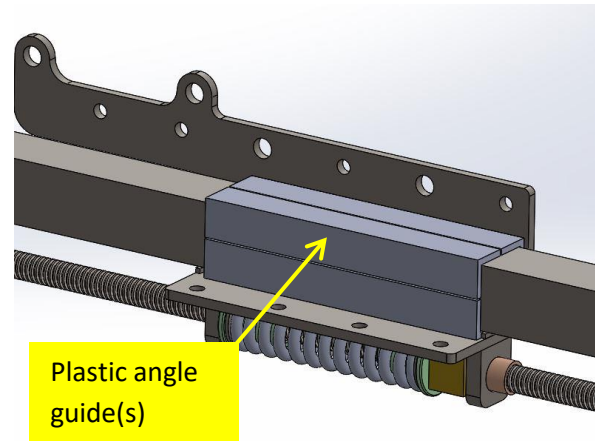


Figure 10

13. Align the upper holes in the outer side plate assembly installed in step 8 with the holes in the mid plate section (**ITEM 2**) and use four (4) $\frac{1}{2}$ " X 1-1/2" bolts (**ITEM 6**) and $\frac{1}{2}$ " nyloc nuts (**ITEM 7**) to fasten them together. Leave the nuts fairly loose to ease assembly. Make certain that the newly installed plastic angle guides are within the confinements of the retaining tabs of the mid plate section.

Figure 11

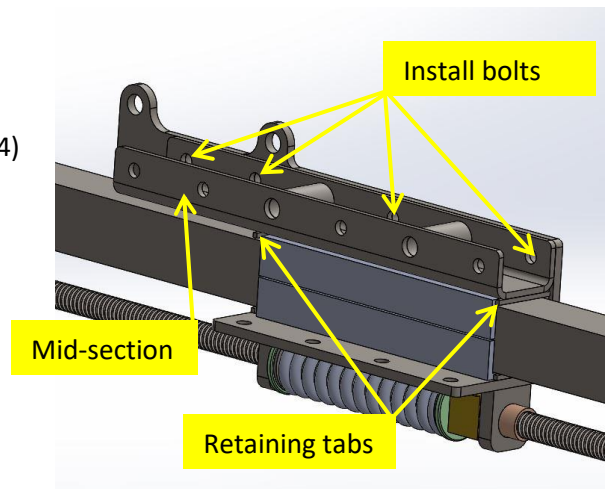


Figure 11

14. Place the inner side plate (**ITEM 3**) with the holes lined on the mid plate section and the lower holes of the outer side plate assembly. Thread the remaining $\frac{1}{2}$ " x 1-1/2" bolts (**ITEM 6**) and nuts (**ITEM 7**) into the holes as shown in figure 12 and tighten. Do not install the $\frac{3}{4}$ " x 6 bolt until step 15. Be certain that the motor mount assembly moves freely along the sliding mechanism. **Figures 12 & 13**

Figure 12

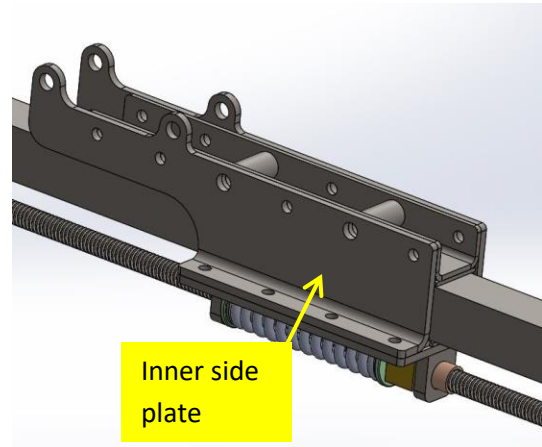
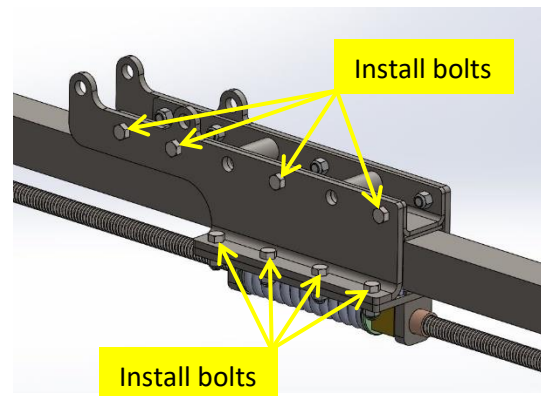


Figure 13



15. Thread the $\frac{3}{4}$ x 6 bolt (**ITEM 9**) through the right side of the motor mount (**ITEM 4**). Thread one of the bronze thrust washers (**ITEM 5**) onto the bolt. Align and thread the bolt through the rear hole of the outer side plate with the thrust washer between the plate and the motor mount. Before going through to the other side, install the other bronze thrust washer between the inner side plate and motor mount. Finish threading the bolt through to the outside of the motor mount and install the $\frac{3}{4}$ " nyloc nut (**ITEM 10**) and tighten. **Figures 14 & 15**

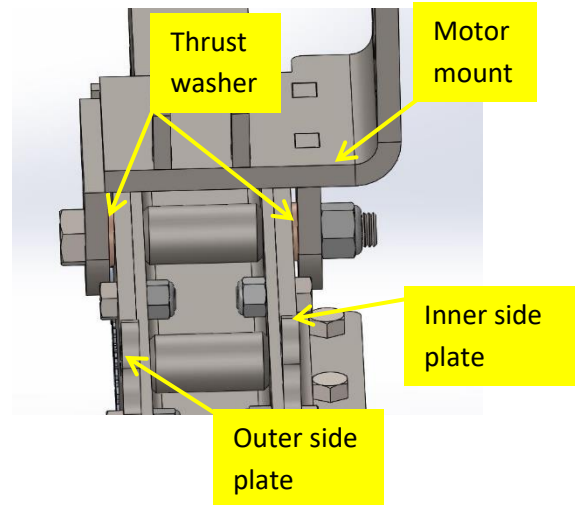


Figure 14

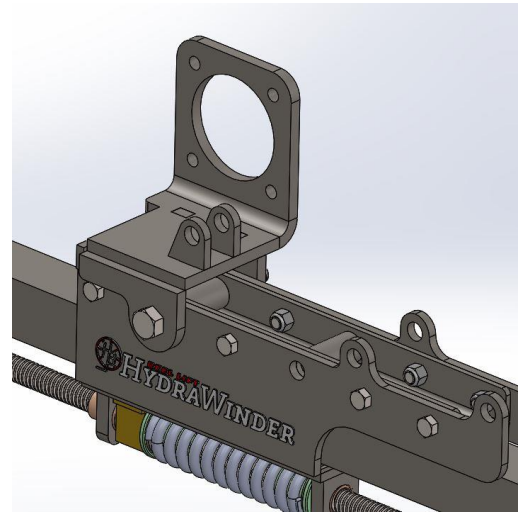


Figure 15

16. Place the hydraulic motor removed from steps 5 & 6 with the body of the motor toward the outer side plate onto the motor mount and the hydraulic ports toward the rear. Use the four (4) $\frac{1}{2}$ x 2 bolts (ITEM 7) and $\frac{1}{2}$ " nyloc nuts (ITEM 8) to fasten the motor to the motor mount. Install the bolts through the motor to the mount with the nuts on the mount.

Figure 16

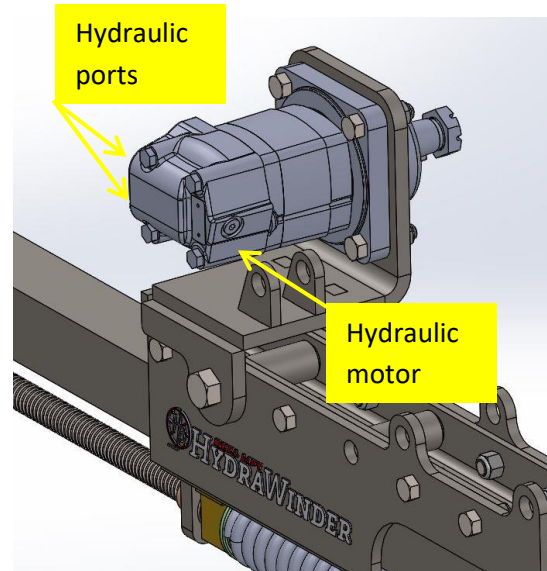


Figure 16

17. Reinstall the wheel hub onto the motor shaft and reinstall the wheel onto the hub.
18. Reconnect the hydraulic hoses removed in step 1 to the motor.

19. Refer to the **HydraF8R** installation guide for installation of the braking cylinder and hoses.

Note: To accommodate reels 36-inches and smaller, the motor mount will have to be moved forward and the hydraulic hoses will need to be 6-inches longer. See the following picture for motor mount placement.

